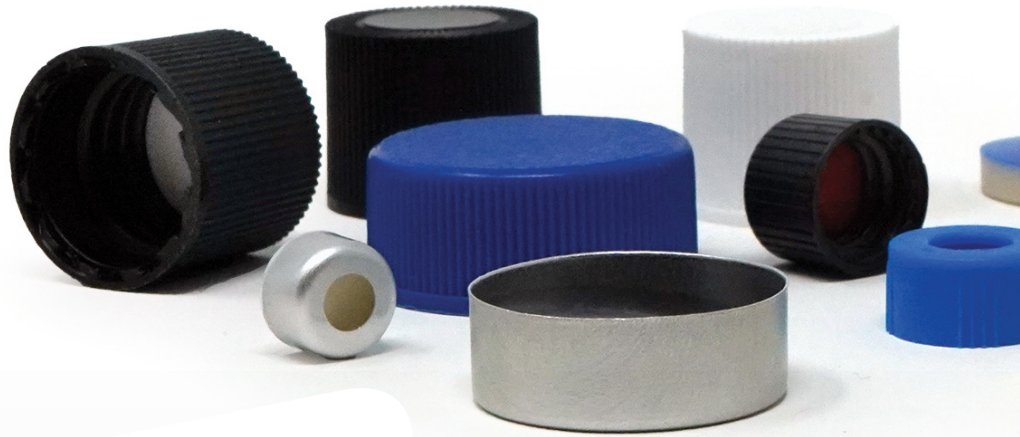


SAINT-GOBAIN MEDICAL

Specialty Closures



Customized septa, liners and closure systems

Closure systems you can rely on

Our Specialty Closures products are made from the highest- grade materials. Saint-Gobain is vertically integrated in the production of barrier films, such as Polypropylene, Polycarbonate, PTFE, FEP, PFA and ETFE.

Protecting the most critical samples

As a global leader in specialty closures Saint-Gobain can provide technical solutions for your complex requirements. With expertise in fluoropolymer films and elastomer materials, especially silicone, and cutting-edge manufacturing processes, we offer top-quality products with the highest purity and consistency.

World Class Manufacturing

With more than 50 years of manufacturing experience and custom solutions, Saint-Gobain utilizes inline fully automated production lines with 100% inspection for reliability and efficiency. Our facility is ISO 9001 (2015 certified), ensuring the highest standards of quality. Additional offerings include specialized capabilities such as Glue-fit bonding, site machining, and prototyping, which further enhance our ability to deliver precise and repeatable solutions.

Sustainability and EHS

Saint-Gobain is committed to finding sustainable solutions that benefit our employees, community, and world. We are proud to offer Fluoropolymer-alternative solutions for your unique application & process.

MANUFACTURING MATERIALS

- Elastomer films
- Platinum cured silicone
- Polycarbonate
- Polypropylene
- Skived & cast PTFE
- HDPE
- Polyolefin
- Fluoropolymer-alternative solutions

CAPABILITIES

- Microlink® bonded liners
- Glue-fit bonded liners
- 100% vision inspected
- Fully automated
- Split septa
- ISO 9001 (2015 certified)
- Site machining & prototypes



The right fit for every application



Diagnostics & Microbiology

- IVD testing and sample collection
- Ultra pure, low leachable & extractables
- Mechanically bonded cap & liner eliminates adhesive and prevents liner fall-out



Environmental & Water Testing

- COD water testing
- Liners designed to withstand the demanding solutions



Chromatography

- Open top cap with liner solutions for your testing needs
- Complete closures or septa only options



Medical Device Packaging

- Custom liner solutions including the Heart Valve market
- Ultra-pure materials and state-of-the-art manufacturing automation equipment



Pharmaceutical Packaging

- Leak proof, inert, & reliable solutions to meet all your application and regulatory requirements
- Sterilizable options are available based on the chosen solution



Chemical Packaging

- Chemically resistant films available
- Breathable liners allow for off-gassing to prevent bursting or failures

Product recommendations are based on a combination of industry knowledge, material science expertise, and/or material testing data. Contact Saint-Gobain Medical for further specialty closures recommendation information.

We design, develop and deliver custom medical components and engineered systems for medical devices

Silicone Molding • Filtration Technologies • Extrusion Solutions • Catheter Systems • Specialty Closures

Saint-Gobain Performance Plastics Corporation's Life Science ("Saint-Gobain") products that are used as components in the manufacture of any Medical Devices (as defined by the FDA) are sold by Saint-Gobain only and exclusively to Medical Device manufacturers for use in the manufacture, assembly or distribution of their medical devices. Medical Device manufacturers, to whom Saint-Gobain sells components or for whom Saint-Gobain acts as a subcontractor for finished products, are solely responsible for determining whether their finished products are a medical device and complying with the appropriate certifications and registrations.

NOTE: This document is intended to provide information about the product to enable you to consider whether generally the Product meets your application need and is not intended to provide product specification. This document should not be considered a Product warranty or guaranty. To the extent this document mentions any tests done by Saint-Gobain, such tests are done under controlled laboratory circumstances and hence other factors in your use and application may impact such values.

FLS-5387-1024-LSMC // © 2024 SAINT-GOBAIN PERFORMANCE PLASTICS



SAINT-GOBAIN MEDICAL
[medical.saint-gobain.com](https://www.medical.saint-gobain.com)

